

**Topic: Education  
(IOM, Overseas Processing Entity, Nepal)**

**Activity: Jum's Stepping Stones of Education Activity**

---

<b>Introduction</b>	The purpose of this activity is to show participants that completing a course of study in the U.S. is neither easy nor cheap; one has to work hard to reach one's goals. The trainer will ask participants to spread out a large number of cut-outs related to educational options in the U.S. This activity appears to be very complicated, but done slowly and step-by-step, it outlines clearly the educational options in the U.S.
<b>Lesson Time</b>	40-60 minutes
<b>Materials</b>	<p>Education diagram (provided below)</p> <p>Cut-outs with different information written on them, which is as follows (and provided below):</p> <ul style="list-style-type: none"><li>• Kindergarten, Primary School, Junior High School, High School</li><li>• ESL, GED</li><li>• Vocational/Technical training, Community/Junior Colleges, Universities</li><li>• Associates Degree, Certificate, Bachelor's Degree, Master's Degree, PhD</li><li>• 5 cut-outs with numbers of years required to complete each level</li><li>• Cut-outs with average annual salary related to each certificate or degree</li><li>• Cut-outs with average tuition fees for all levels of adult schools</li><li>• Cut-outs with FREE, pictures of SCHOOL BUS, LUNCH TRAY and 9 arrows</li><li>• Laminated pictures of various occupations at each of the education levels (entry level jobs, trades, professional jobs)</li></ul>
<b>Practice</b>	<p>Participants will lay out the various cut-outs to make up the education diagram:</p> <ol style="list-style-type: none"><li>1. Hand out one or two cut-outs to each participant.</li><li>2. Ask participants what the first step in education is in the United States. (Kindergarten)</li><li>3. Ask the participant holding the KINDERGARTEN cut-out to put it down at one end of the room. Discuss as needed. (Children under the age of 5 or 6, depending on which state they are going to, should be registered in kindergarten. Other options are home care, daycare or homeschooling.)</li><li>4. Move on to the next level, and have participants put down the appropriate cut-outs above "Kindergarten". Continue to elementary, middle and high school. Discuss all aspects of education up to this point. (Cost, role of the parents or guardians, school activities, school vacation, grading system, etc.)</li><li>5. Discuss the importance of learning English and have the participant holding the ESL cut-out to put it down as shown in the diagram.</li><li>6. Ask the participant holding the GED cut-out to show it to the room and inquire to find out the meaning of it. Discuss. (Who needs a GED? Is a GED free? What can you do once you get a GED?)</li><li>7. Move on to higher levels of study. Ask participants where you can go after high school. Tell them of the various options.</li><li>8. Ask the participants holding the Community College, Vocational School and University cut-outs to step in and lay them above the High School cut-out. Explain how long each course of study takes to be completed. The participants holding 1-2 Years and 4 Years will step in to put them above the last laid-in cut-outs respectively.</li></ol>

This document was developed with funding from the Bureau of Population, Refugees, and Migration, United States Department of State, but does not necessarily represent the policy of that agency and the reader should not assume endorsement by the federal government.

(What do you get in the end? A certificate? An associate's degree? A bachelor's degree?)

9. Explain that there is a cheaper way to earn a B.A., which involves studying 2 years at a Junior College, and then transferring credit to a university. Explore various aspects of each course of study. Discuss scholarships, bursaries, the re-certification process, working part-time, summer jobs, internships, etc.
10. Continue in the same way to Masters and PhD programs, until the diagram is complete.
11. Now it is time to consider the cost of education. Ask participants holding the School Fees cut-outs to step forward and put them beside the cut-outs where they think they should go. Correct as needed.
12. Hand out employment cut-outs to each participant. Let them go through the cut-outs and talk to amongst themselves. Encourage participants to ask questions if they can't make out what occupations the picture represents.
13. After a few minutes, ask participants to lay down the pictures beside the different levels of education as they see fit. Once finished, ask the rest of the group to see if they agree with the placements. Change as necessary.
14. Finally, it is time to discuss money. Ask the participants holding the salary range cut-outs to step in and put the respective cut-outs beside where they see fit.

#### Discussion

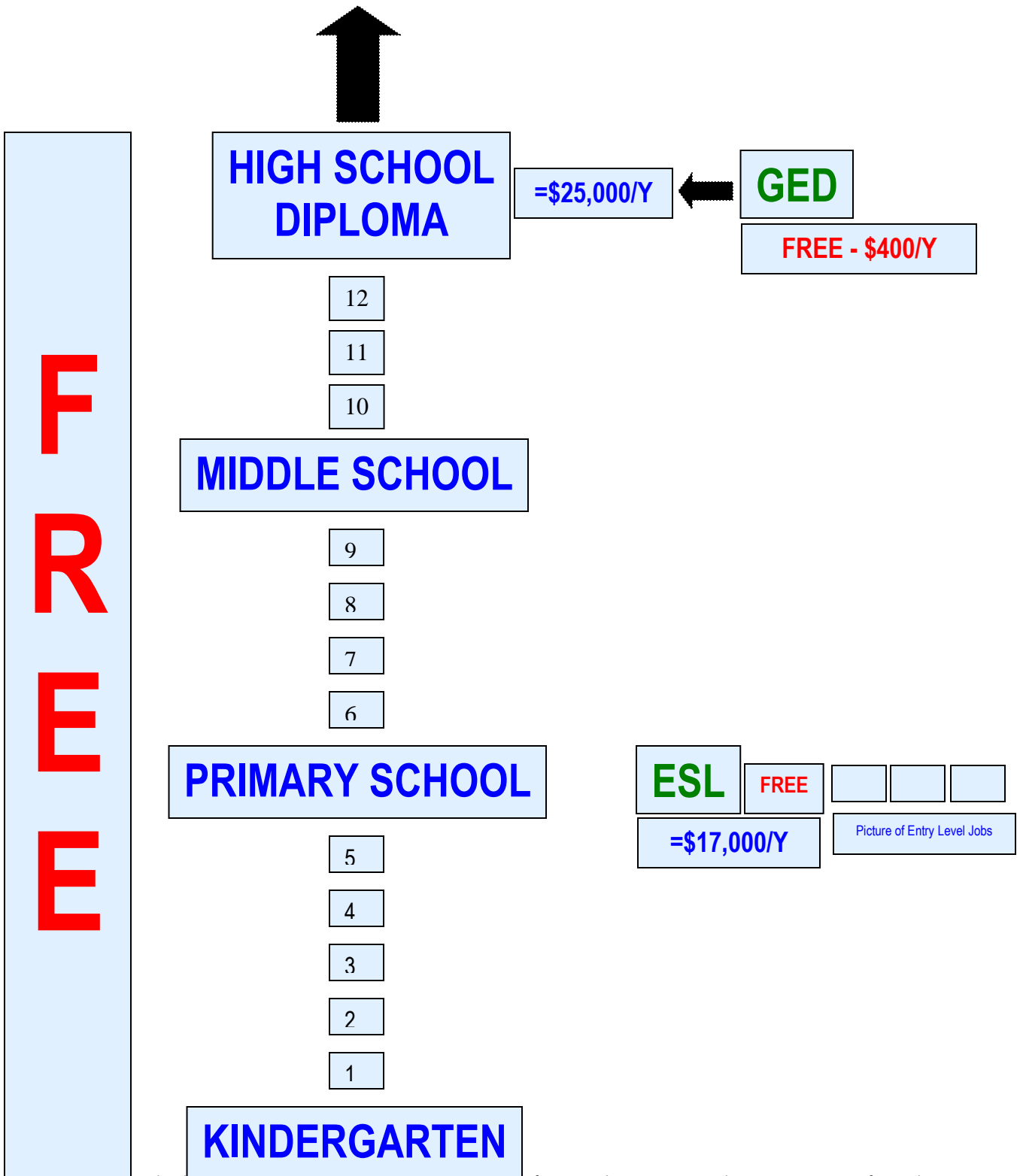
1. What do you see?
2. How do you feel about it?

#### Variations

3. Divide the class into groups of 4-5. Tell participants that you will show them a video and that you will quiz them on it afterward. Hand out the quiz and give participants a few minutes to study the questions. Show the video. After the video, ask participants to answer the quiz questions. Once done, check answers with the whole class.
4. Divide the class into 2 groups. Tell them that you will show them a video and that they should watch carefully as there will be a competition afterward: they will be asked to make up a number of questions for the opposite group to test their knowledge. Show the video. Give groups 5 minutes to come up with questions. Have them quiz each other; you can make it a competition, keeping score.

This document was developed with funding from the Bureau of Population, Refugees, and Migration, United States Department of State, but does not necessarily represent the policy of that agency and the reader should not assume endorsement by the federal government.

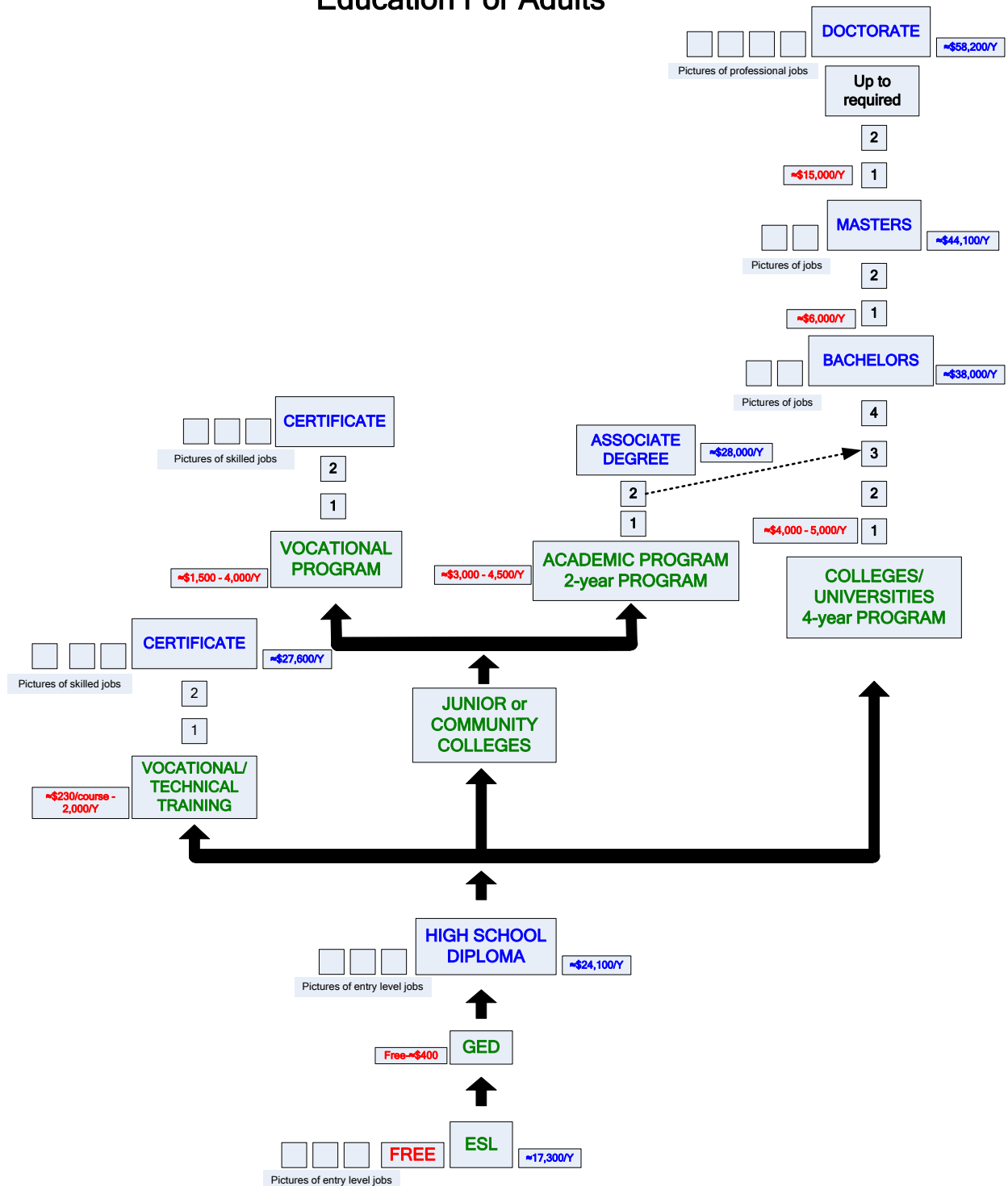
PLEASE SEE "EDUCATION FOR ADULTS"



This document was developed with funding from the Bureau of Population, Refugees, and Migration, United States Department of State, but does not necessarily represent the policy of that agency and the reader should not assume endorsement by the federal government.

This document was developed with funding from the Bureau of Population, Refugees, and Migration, United States Department of State, but does not necessarily represent the policy of that agency and the reader should not assume endorsement by the federal government.

# Education For Adults



Blue figures = Earning after tax, 2003  
 Red figures = Tuition fees, public colleges/u

This document was developed with funding from the Bureau of Population, Refugees, and Migration, United States Department of State, but does not necessarily represent the policy of that agency and the reader should not assume endorsement by the federal government.

# Kindergarten

This document was developed with funding from the Bureau of Population, Refugees, and Migration, United States Department of State, but does not necessarily represent the policy of that agency and the reader should not assume endorsement by the federal government.

For more information about resources available from the Cultural Orientation Resource Center, visit [www.culturalorientation.net](http://www.culturalorientation.net).

# Grade 1-5

## Primary/ Elementary School

This document was developed with funding from the Bureau of Population, Refugees, and Migration, United States Department of State, but does not necessarily represent the policy of that agency and the reader should not assume endorsement by the federal government.

For more information about resources available from the  
Cultural Orientation Resource Center, visit [www.culturalorientation.net](http://www.culturalorientation.net).

# Grade 6-9

## Middle/ Junior High School

This document was developed with funding from the Bureau of Population, Refugees, and Migration, United States Department of State, but does not necessarily represent the policy of that agency and the reader should not assume endorsement by the federal government.

For more information about resources available from the Cultural Orientation Resource Center, visit [www.culturalorientation.net](http://www.culturalorientation.net).



# Grade 10-12

## High School

This document was developed with funding from the Bureau of Population, Refugees, and Migration, United States Department of State, but does not necessarily represent the policy of that agency and the reader should not assume endorsement by the federal government.

For more information about resources available from the Cultural Orientation Resource Center, visit [www.culturalorientation.net](http://www.culturalorientation.net).

# Associate Degree

This document was developed with funding from the Bureau of Population, Refugees, and Migration, United States Department of State, but does not necessarily represent the policy of that agency and the reader should not assume endorsement by the federal government.

For more information about resources available from the  
Cultural Orientation Resource Center, visit [www.culturalorientation.net](http://www.culturalorientation.net).

# Certificate

This document was developed with funding from the Bureau of Population, Refugees, and Migration, United States Department of State, but does not necessarily represent the policy of that agency and the reader should not assume endorsement by the federal government.

For more information about resources available from the Cultural Orientation Resource Center, visit [www.culturalorientation.net](http://www.culturalorientation.net).

# Bachelor's Degree

This document was developed with funding from the Bureau of Population, Refugees, and Migration, United States Department of State, but does not necessarily represent the policy of that agency and the reader should not assume endorsement by the federal government.

For more information about resources available from the  
Cultural Orientation Resource Center, visit [www.culturalorientation.net](http://www.culturalorientation.net).

# Master's Degree

This document was developed with funding from the Bureau of Population, Refugees, and Migration, United States Department of State, but does not necessarily represent the policy of that agency and the reader should not assume endorsement by the federal government.

For more information about resources available from the  
Cultural Orientation Resource Center, visit [www.culturalorientation.net](http://www.culturalorientation.net).

# Doctorate (Ph.D)

This document was developed with funding from the Bureau of Population, Refugees, and Migration, United States Department of State, but does not necessarily represent the policy of that agency and the reader should not assume endorsement by the federal government.

For more information about resources available from the Cultural Orientation Resource Center, visit [www.culturalorientation.net](http://www.culturalorientation.net).

# University

This document was developed with funding from the Bureau of Population, Refugees, and Migration, United States Department of State, but does not necessarily represent the policy of that agency and the reader should not assume endorsement by the federal government.

For more information about resources available from the Cultural Orientation Resource Center, visit [www.culturalorientation.net](http://www.culturalorientation.net).

# Community/Junior College

This document was developed with funding from the Bureau of Population, Refugees, and Migration, United States Department of State, but does not necessarily represent the policy of that agency and the reader should not assume endorsement by the federal government.

For more information about resources available from the  
Cultural Orientation Resource Center, visit [www.culturalorientation.net](http://www.culturalorientation.net).



# Vocational/ Technical College

This document was developed with funding from the Bureau of Population, Refugees, and Migration, United States Department of State, but does not necessarily represent the policy of that agency and the reader should not assume endorsement by the federal government.

For more information about resources available from the  
Cultural Orientation Resource Center, visit [www.culturalorientation.net](http://www.culturalorientation.net).

# 4 years program

This document was developed with funding from the Bureau of Population, Refugees, and Migration, United States Department of State, but does not necessarily represent the policy of that agency and the reader should not assume endorsement by the federal government.

For more information about resources available from the  
Cultural Orientation Resource Center, visit [www.culturalorientation.net](http://www.culturalorientation.net).

# 1-2 years program

This document was developed with funding from the Bureau of Population, Refugees, and Migration, United States Department of State, but does not necessarily represent the policy of that agency and the reader should not assume endorsement by the federal government.

For more information about resources available from the Cultural Orientation Resource Center, visit [www.culturalorientation.net](http://www.culturalorientation.net).

# 1-2 years program

This document was developed with funding from the Bureau of Population, Refugees, and Migration, United States Department of State, but does not necessarily represent the policy of that agency and the reader should not assume endorsement by the federal government.

For more information about resources available from the  
Cultural Orientation Resource Center, visit [www.culturalorientation.net](http://www.culturalorientation.net).

# 1-2 years program

This document was developed with funding from the Bureau of Population, Refugees, and Migration, United States Department of State, but does not necessarily represent the policy of that agency and the reader should not assume endorsement by the federal government.

For more information about resources available from the  
Cultural Orientation Resource Center, visit [www.culturalorientation.net](http://www.culturalorientation.net).

# 1-2 years program

This document was developed with funding from the Bureau of Population, Refugees, and Migration, United States Department of State, but does not necessarily represent the policy of that agency and the reader should not assume endorsement by the federal government.

For more information about resources available from the  
Cultural Orientation Resource Center, visit [www.culturalorientation.net](http://www.culturalorientation.net).

# GED

## General Equivalency Diploma

This document was developed with funding from the Bureau of Population, Refugees, and Migration, United States Department of State, but does not necessarily represent the policy of that agency and the reader should not assume endorsement by the federal government.

For more information about resources available from the  
Cultural Orientation Resource Center, visit [www.culturalorientation.net](http://www.culturalorientation.net).

# ESL

## English as a Second Language

This document was developed with funding from the Bureau of Population, Refugees, and Migration, United States Department of State, but does not necessarily represent the policy of that agency and the reader should not assume endorsement by the federal government.

For more information about resources available from the Cultural Orientation Resource Center, visit [www.culturalorientation.net](http://www.culturalorientation.net).



# School Bus

This document was developed with funding from the Bureau of Population, Refugees, and Migration, United States Department of State, but does not necessarily represent the policy of that agency and the reader should not assume endorsement by the federal government.

For more information about resources available from the Cultural Orientation Resource Center, visit [www.culturalorientation.net](http://www.culturalorientation.net).



This document was developed with funding from the Bureau of Population, Refugees, and Migration, United States Department of State, but does not necessarily represent the policy of that agency and the reader should not assume endorsement by the federal government.

For more information about resources available from the Cultural Orientation Resource Center, visit [www.culturalorientation.net](http://www.culturalorientation.net).

# Lunch



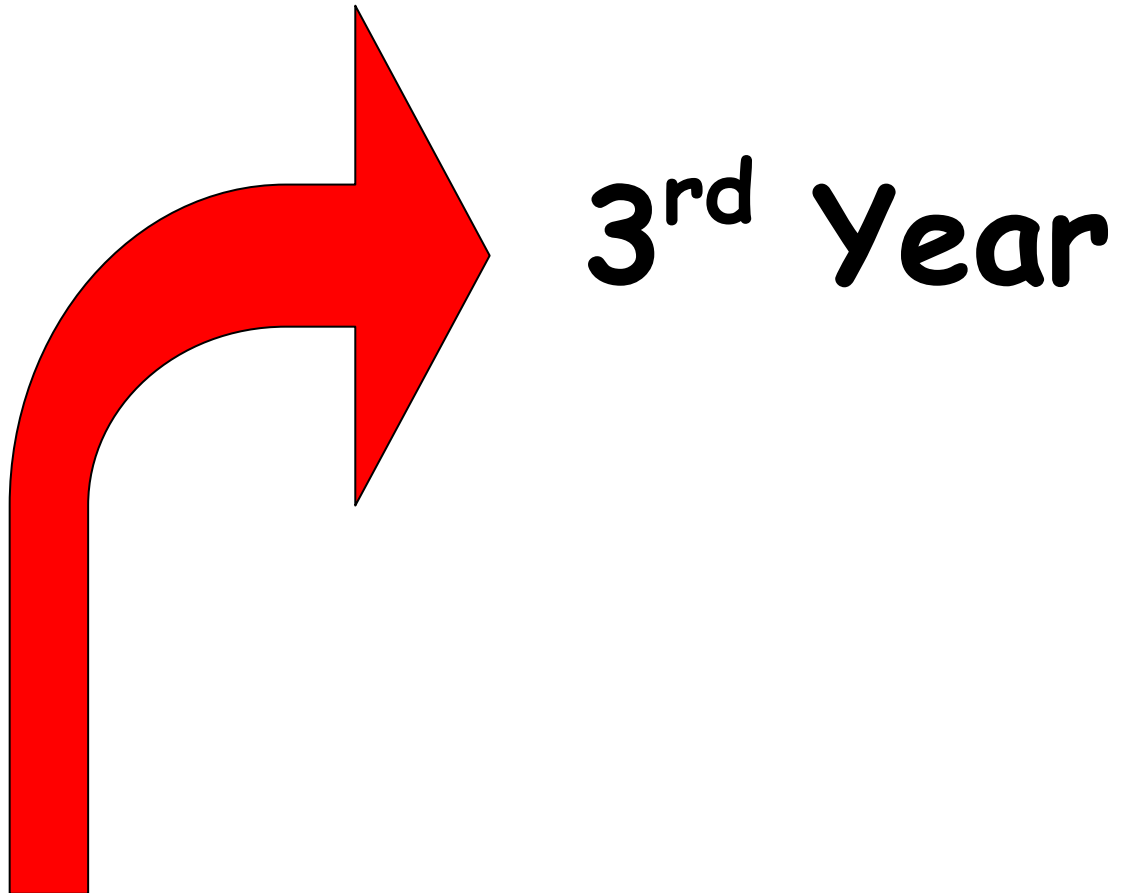
This document was developed with funding from the Bureau of Population, Refugees, and Migration, United States Department of State, but does not necessarily represent the policy of that agency and the reader should not assume endorsement by the federal government.

For more information about resources available from the Cultural Orientation Resource Center, visit [www.culturalorientation.net](http://www.culturalorientation.net).

# FREE

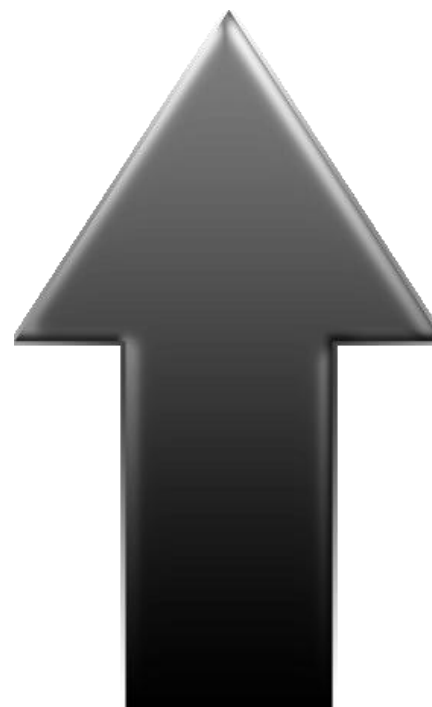
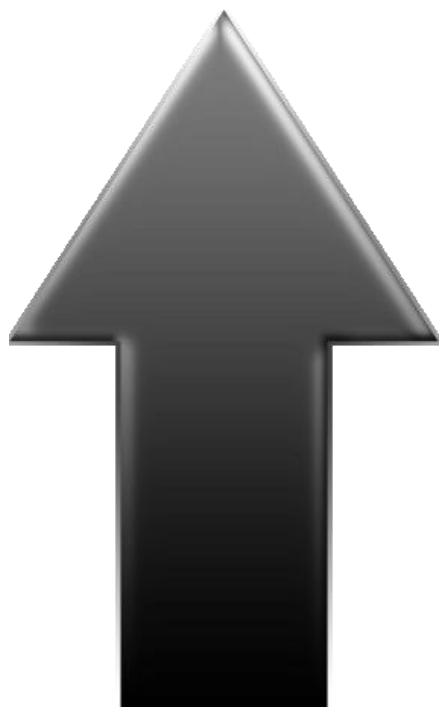
This document was developed with funding from the Bureau of Population, Refugees, and Migration, United States Department of State, but does not necessarily represent the policy of that agency and the reader should not assume endorsement by the federal government.

For more information about resources available from the Cultural Orientation Resource Center, visit [www.culturalorientation.net](http://www.culturalorientation.net).



This document was developed with funding from the Bureau of Population, Refugees, and Migration, United States Department of State, but does not necessarily represent the policy of that agency and the reader should not assume endorsement by the federal government.

For more information about resources available from the Cultural Orientation Resource Center, visit [www.culturalorientation.net](http://www.culturalorientation.net).



This document was developed with funding from the Bureau of Population, Refugees, and Migration, United States Department of State, but does not necessarily represent the policy of that agency and the reader should not assume endorsement by the federal government.

For more information about resources available from the Cultural Orientation Resource Center, visit [www.culturalorientation.net](http://www.culturalorientation.net).

# Free - \$400 GED

This document was developed with funding from the Bureau of Population, Refugees, and Migration, United States Department of State, but does not necessarily represent the policy of that agency and the reader should not assume endorsement by the federal government.

For more information about resources available from the  
Cultural Orientation Resource Center, visit [www.culturalorientation.net](http://www.culturalorientation.net).

**\$300/course**  
**≈\$2000/year**  
**Vocational**

This document was developed with funding from the Bureau of Population, Refugees, and Migration, United States Department of State, but does not necessarily represent the policy of that agency and the reader should not assume endorsement by the federal government.

For more information about resources available from the  
Cultural Orientation Resource Center, visit [www.culturalorientation.net](http://www.culturalorientation.net).



≈\$4500/year  
Junior College

This document was developed with funding from the Bureau of Population, Refugees, and Migration, United States Department of State, but does not necessarily represent the policy of that agency and the reader should not assume endorsement by the federal government.

For more information about resources available from the  
Cultural Orientation Resource Center, visit [www.culturalorientation.net](http://www.culturalorientation.net).

≈\$5000-  
\$30000/year  
University

This document was developed with funding from the Bureau of Population, Refugees, and Migration, United States Department of State, but does not necessarily represent the policy of that agency and the reader should not assume endorsement by the federal government.

For more information about resources available from the Cultural Orientation Resource Center, visit [www.culturalorientation.net](http://www.culturalorientation.net).

≈ \$6000/year  
Master's

This document was developed with funding from the Bureau of Population, Refugees, and Migration, United States Department of State, but does not necessarily represent the policy of that agency and the reader should not assume endorsement by the federal government.

For more information about resources available from the  
Cultural Orientation Resource Center, visit [www.culturalorientation.net](http://www.culturalorientation.net).

≈ \$15000/year  
PhD

This document was developed with funding from the Bureau of Population, Refugees, and Migration, United States Department of State, but does not necessarily represent the policy of that agency and the reader should not assume endorsement by the federal government.

For more information about resources available from the  
Cultural Orientation Resource Center, visit [www.culturalorientation.net](http://www.culturalorientation.net).

≈\$17,000/year  
Less than HS

This document was developed with funding from the Bureau of Population, Refugees, and Migration, United States Department of State, but does not necessarily represent the policy of that agency and the reader should not assume endorsement by the federal government.

For more information about resources available from the  
Cultural Orientation Resource Center, visit [www.culturalorientation.net](http://www.culturalorientation.net).

≈\$25,000/year  
High School/GED

This document was developed with funding from the Bureau of Population, Refugees, and Migration, United States Department of State, but does not necessarily represent the policy of that agency and the reader should not assume endorsement by the federal government.

For more information about resources available from the  
Cultural Orientation Resource Center, visit [www.culturalorientation.net](http://www.culturalorientation.net).

≈\$25,000

Vocational

This document was developed with funding from the Bureau of Population, Refugees, and Migration, United States Department of State, but does not necessarily represent the policy of that agency and the reader should not assume endorsement by the federal government.

For more information about resources available from the Cultural Orientation Resource Center, visit [www.culturalorientation.net](http://www.culturalorientation.net).

≈\$28,000

Associate Degree

This document was developed with funding from the Bureau of Population, Refugees, and Migration, United States Department of State, but does not necessarily represent the policy of that agency and the reader should not assume endorsement by the federal government.

For more information about resources available from the  
Cultural Orientation Resource Center, visit [www.culturalorientation.net](http://www.culturalorientation.net).



≈ \$38,000/year  
Bachelors

This document was developed with funding from the Bureau of Population, Refugees, and Migration, United States Department of State, but does not necessarily represent the policy of that agency and the reader should not assume endorsement by the federal government.

For more information about resources available from the  
Cultural Orientation Resource Center, visit [www.culturalorientation.net](http://www.culturalorientation.net).

≈ \$44,000/year  
Masters

This document was developed with funding from the Bureau of Population, Refugees, and Migration, United States Department of State, but does not necessarily represent the policy of that agency and the reader should not assume endorsement by the federal government.

For more information about resources available from the  
Cultural Orientation Resource Center, visit [www.culturalorientation.net](http://www.culturalorientation.net).

≈ \$50,000/year

PhD

This document was developed with funding from the Bureau of Population, Refugees, and Migration, United States Department of State, but does not necessarily represent the policy of that agency and the reader should not assume endorsement by the federal government.

For more information about resources available from the  
Cultural Orientation Resource Center, visit [www.culturalorientation.net](http://www.culturalorientation.net).

**≈\$50,000/year**  
**Highly Skilled**  
**(Vocational)**

This document was developed with funding from the Bureau of Population, Refugees, and Migration, United States Department of State, but does not necessarily represent the policy of that agency and the reader should not assume endorsement by the federal government.

For more information about resources available from the  
Cultural Orientation Resource Center, visit [www.culturalorientation.net](http://www.culturalorientation.net).

This document was developed with funding from the Bureau of Population, Refugees, and Migration, United States Department of State, but does not necessarily represent the policy of that agency and the reader should not assume endorsement by the federal government.

For more information about resources available from the Cultural Orientation Resource Center, visit [www.culturalorientation.net](http://www.culturalorientation.net).